

Delta

A range of systems for taking in and preparing the harvest, from the vineyard to the winery.



At Bucher Vaslin, we think of our customers as part of our DNA.

That's why, for over 75 years now, we have been helping you, our customers, find your path to success.

More specifically, we offer ever more innovative systems for receiving, processing, and transferring grape harvests. You can learn all about those systems in our Delta range.

Your needs are at the core of our concerns. Bucher Vaslin also offers technological solutions to meet those needs in any winery configuration.

Lastly, our service teams are devoted to providing you with support and training to help you more easily operate your Bucher Vaslin equipment.

We invite you to pore through the various sections of this catalogue and learn about the full extent of the products and services we have to offer.

Happy reading!

Contents

Our history

Our facilities

Our strengths

Winery Engineering
Services

The Delta range

Taking in the har-
vested grapes

Transferring
the harvest

Sorting the
harvest

Processing the
harvest

05

06

08

10

12

14

32

42

56



Bucher Vaslin

From tradition to innovation - A century of know-how

For almost two centuries, Bucher Vaslin has had a real passion for vines and wine. From the first presses built by Joseph Vaslin in 1856 and Johann Bucher in 1874, to today's wide range of products, we offer a unique depth of experience to winemakers and oenologists.

The culture of innovation - Our collective experience feeds our research and development

For a long time, Bucher Vaslin has been engaged in research, innovation, and the development of products to meet the needs of you, our customers.

Always attentive to the needs of those in the wine industry and their never-ending quest for quality, we constantly strive to improve our products to make them more efficient, easier to use, and more cost-effective for your business.

Bucher Vaslin provides the winery with all the answers adapted to the needs of the winemaker because wine is a delicate alliance between the terroir, ancestral know-how, and technical expertise. We are proud to be at your side in your quest for perfection.

The strength of a major group - The assurance of continuity

Bucher Vaslin is part of Bucher Industries, a major industrial group with its headquarters in Switzerland near Zurich.

Each of the group's five divisions is a leader in its sector of activity. The agri-food sector in particular:

- Kuhn Group - agricultural machinery
- Bucher Specials - wine production equipment with Bucher Vaslin, fruit juice and beer filtration with Bucher Unipektin.

www.bucherindustries.com

Our history

1857

Joseph Vaslin registered a patent for a horizontal press with a square wooden cage.

1874

Johann Bucher developed the hydraulic press.

1945

Gaston Bernier founded the company Création des Constructions Méca-Métalliques Chalonaises (CMMC).

1946

Gaston Bernier purchased the patents for the Vaslin presses and signed the first concession contract with Juttaud, a company based in Charentes.



1961

The company manufactured its 10,000th wine press. First exports to Japan.



1970

Awarded a Certificate of Merit in the category of corrosion resistant products at the Washington Congress of the Society of Plastics Industries.

1973

The Institut du Développement Industriel (IDI) purchased a stake in the company.

1974

Acquisition of the continuous press manufacturer Coq. A record sales year.

1980

With a view to the exports market, the company changed its name to CMMC.



1983

The company manufactured its 50,000th wine press.

1986

Acquisition of CMMC by Bucher Guyer, a company based in Switzerland. Acquisition of Friulmeccanica, Bucher Guyer's Italian licensee and merger with Vaslin Italia.

1996

CMMC changed its name to Vaslin Bucher SA.

2000

Opening of the American subsidiary through the acquisition of KLR Machines.

2001

Acquisition of Mercier Sanchez, a company based in Rivesaltes, Southern France. The factory became a remote production site.

2006

Vaslin Bucher changed its name to Bucher Vaslin.



2008

Opening of the Chilean subsidiary.

2011


Acquisition of the press manufacturer Sutter.

2014

Establishment of the Argentinian subsidiary.

An international presence



-  Bucher Vaslin S.A. - Chalonnes-sur-Loire
-  Bucher Vaslin S.A. - Rivesaltes
-  Bucher Vaslin S.r.l
-  Bucher Vaslin North America
-  Bucher Vaslin Sudamérica
-  Bucher Vaslin Argentina
-  Distributor countries

A worldwide network of authorised dealers

Selected for their professionalism, Bucher Vaslin dealers form the organisation on the ground that lets you get the benefit of a high quality locally-based service.

Our dealers, who are true regional specialists, are on hand to listen to your needs and provide you with their experience and expertise to help you choose the right equipment and winery set-up. They are eager to assist you before, during, and after the harvest.

See the list of our distribution partners on our website.

**Bucher Vaslin S.A.**

5 Rue Gaston Bernier - BP 70028
49290 Chalonnes-sur-Loire - France
Tel. +33 (0)2 41 74 50 50
connect.buchervaslin.com/contact

Bucher Vaslin S.A.

Allée A. Nobel
66600 Rivesaltes - France
Tel. +33 (0)2 41 74 50 50
connect.buchervaslin.com/contact

Bucher Vaslin S.r.l.

Viale Trieste 56
Romans d'Isonzo - Italia
Tel. +39 0481 908931
commerciale@buchervaslin.com

Bucher Vaslin Northamerica

3100 Dutton Ave, Suite 146
Santa Rosa, CA 95407, California - USA
Tel +1 707 823 2883
bvna@buchervaslin.com

Bucher Vaslin Sudamérica

La Vara 02429, San Bernardo
Santiago - Chile
Tel. +22306 9800
info@buchervaslinsudamerica.com

Bucher Vaslin Argentina

Hernandarias 587
Godoy Cruz - Mendoza
Argentina
Tel. +54 261 4390660
comercial@buchervaslinargentina.com

Our strengths



An innovative dynamic

At the heart of the issues facing the winemaking market, we strive to design innovative, targeted, and effective solutions to help your business succeed.

We are determined to work day by day to support your operations, enhance the value of your products, and provide you with the benefit of our experience to advance your development.

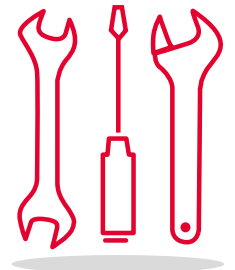
Our Research and Development department travels all over the world to listen to our customers and analyse and design new projects to meet their needs.

Execution and manufacturing

Bucher Vaslin controls the production chain of its equipment, all the way from the supply of raw materials to the delivery of the finished products from its factories in France and abroad.

Throughout their careers, our employees continue to receive training to maintain the level of expertise required to build all the machines in our range.

Employees in different lines of work within our company enable us to manufacture our equipment from moulding the first stainless steel panels all the way to placing the label on the machine.

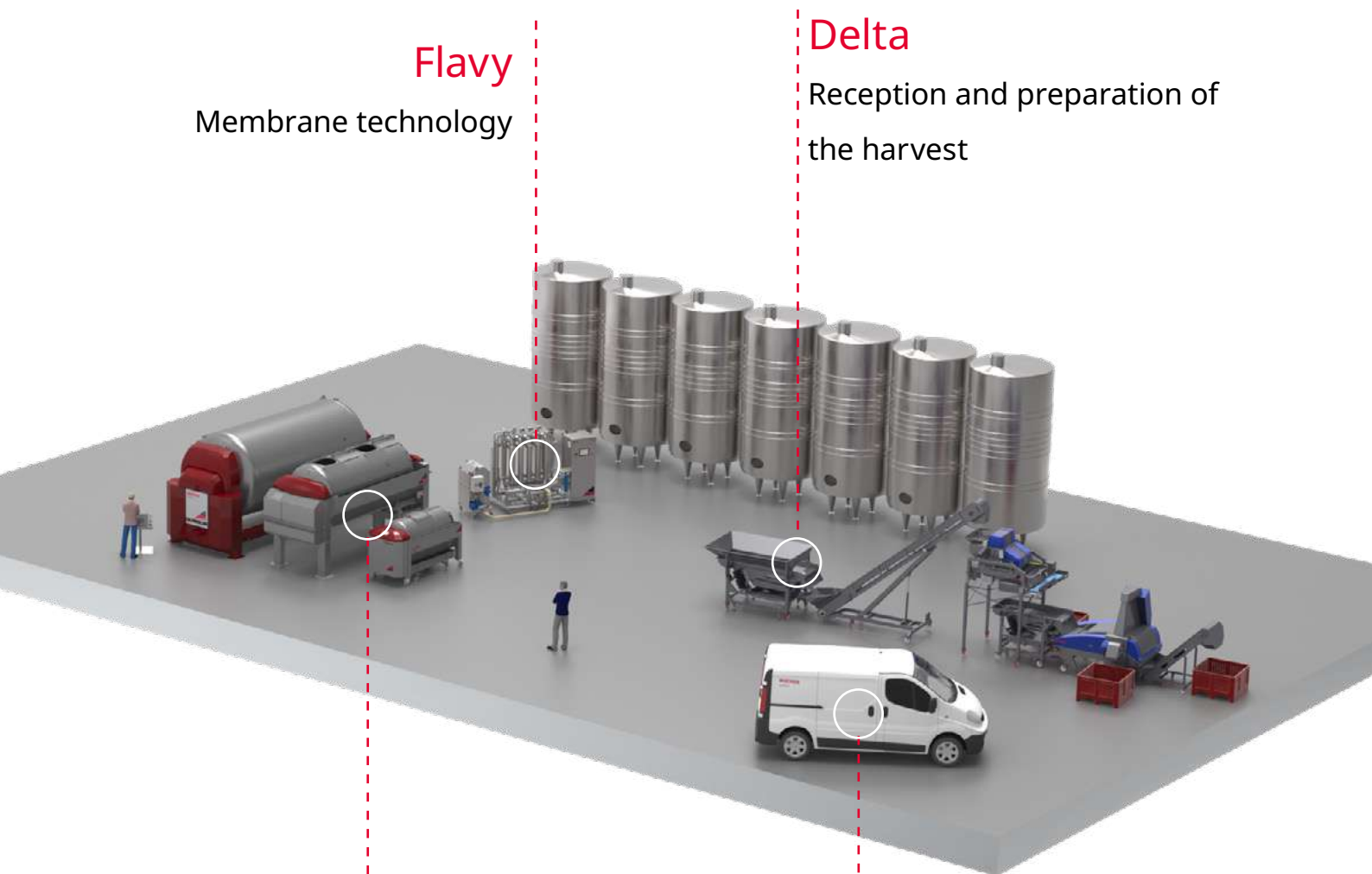


Commitment labels

ISO 9001: 2015

Giving you the assurance that the products will be delivered within the contractual timeframe and successfully put into operation.

An extensive range to meet your needs



Flavy

Membrane technology

Delta

Reception and preparation of the harvest

Bucher

Pressing

Serenity

- Master, training offer
- Connect, connected services
- Assist, assistance contracts
- Retrofit, a newfound rejuvenation
- Winery Engineering Services

Winery Engineering Services

Our professions

A team comprising:

Account manager

The account manager works with our network in collaboration with our sales representatives and dealers around the world.

Account managers have technical expertise and are responsible for analysing, costing, and monitoring the implementation of projects.

The account manager listens to the customer's needs and adapts the products and services to be of maximum benefit to each customer.

Worksite supervisor

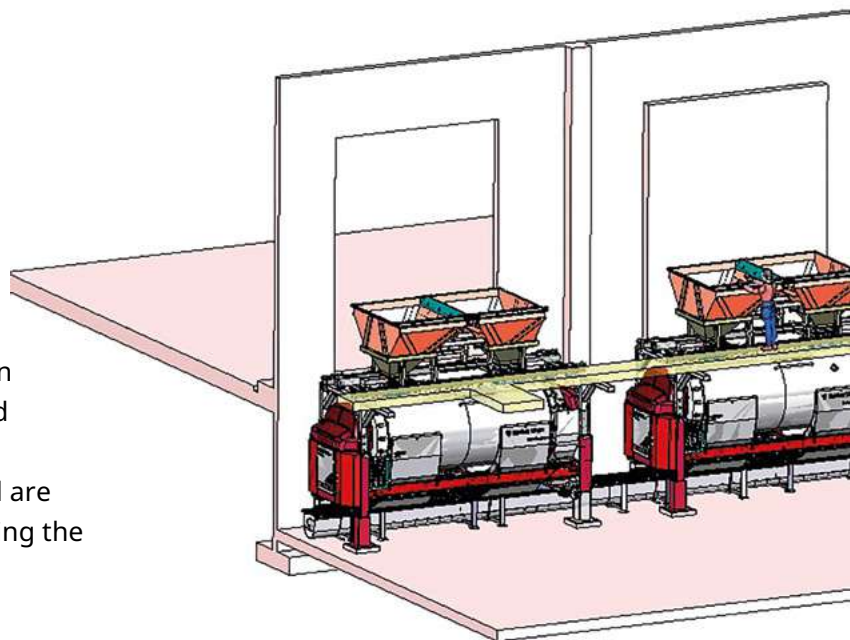
The worksite supervisor coordinates the Bucher Vaslin teams and other service providers in the field. The worksite supervisor is responsible for ensuring safety at the installation site.

Designer

The designer is in charge of the preliminary design and implementation drawings for our clients' installations. The designer also manages interactions with civil engineering works.

Safety

- Risk analysis
- Assistance in drawing up a risk prevention plan
- Interaction with the safety coordinator



End-to-end projects

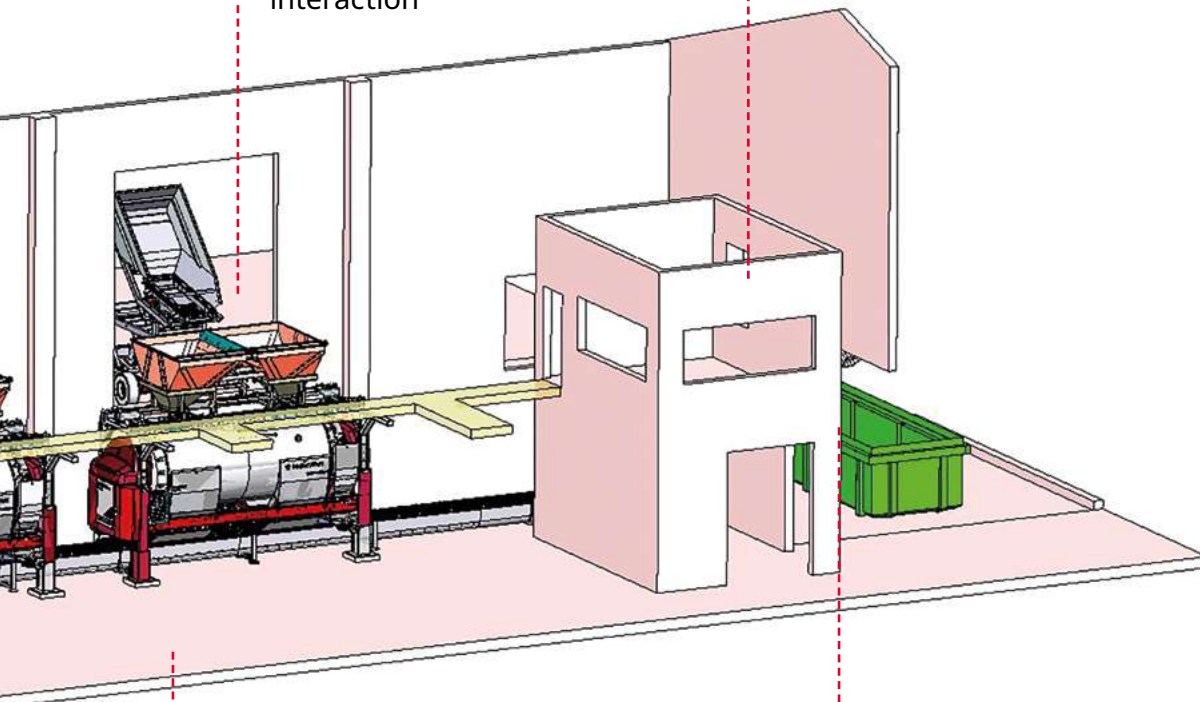
- Full integration of the product and its environment
- Traffic zones
- Piping
- Structural support elements

Product adaptation

- Customisation
- Chassis and process modification
- Automation and supervisory interaction

Implementation monitoring

- Management of the tasks distributed among parties on a worksite
- Deadline monitoring
- Installation documentation



Technical drawings

- 2D/3D drawings
- Layout schematic
- Interactions with civil engineering work

Studies

- Feasibility
- Definition of needs
- Integration of the customer's oenological processes



Maison Rémy Martin,
Cognac, France



Les Celliers de Marius Caius,
Pourrières, France

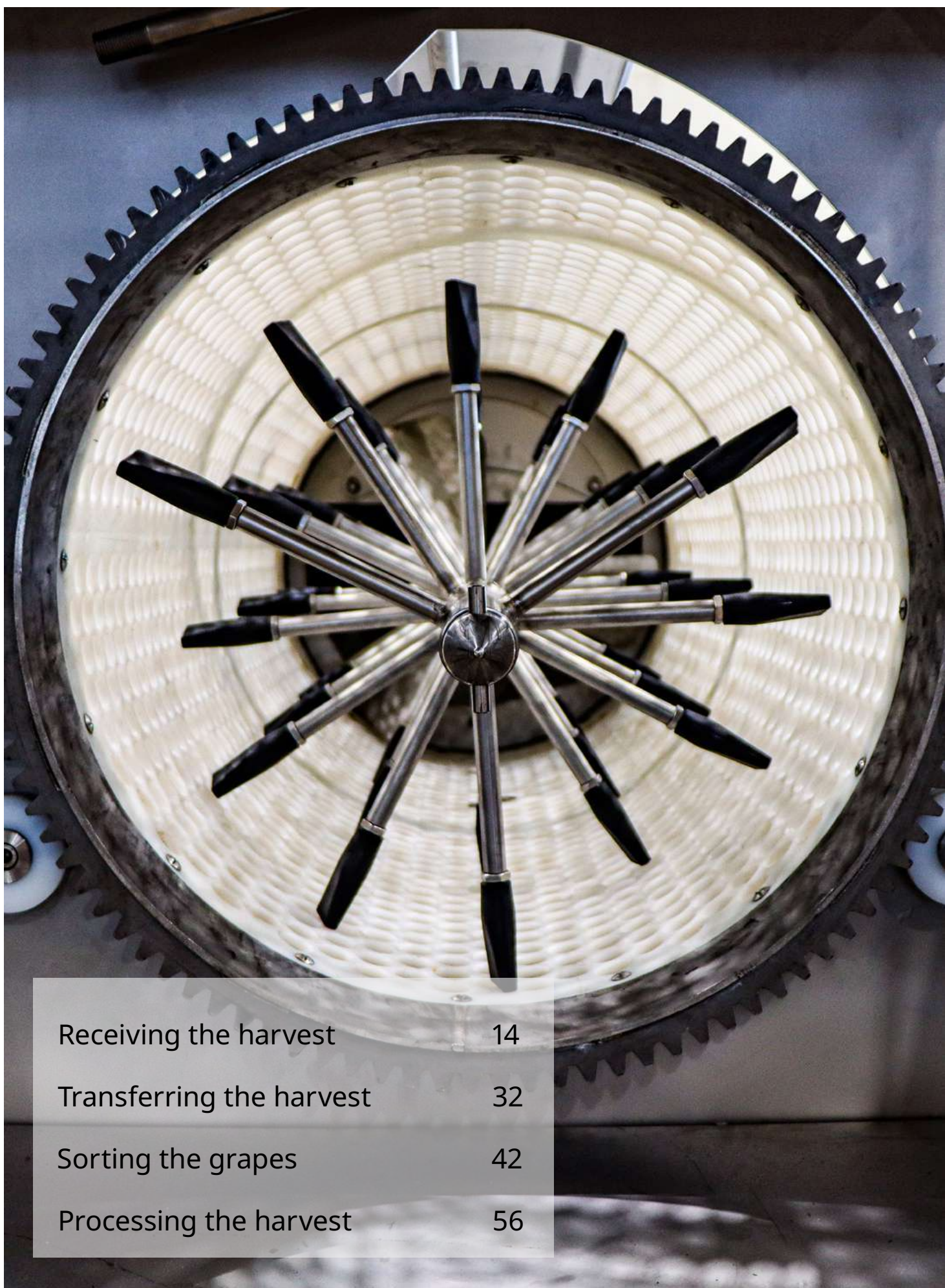
The Delta range

The quality objective on reception of the harvested grapes is generally very high as it has a close bearing on the final quality of the wine.

Juices may be released from the grapes during harvesting (machine harvesting), and may continue during transport, reception in the winery, pumping... and end with pressing.

The fundamental idea of protecting the harvest by limiting mechanical impacts on the grapes must be applied to every stage of collecting and processing the harvest.

To help you achieve that objective, our Delta range of products includes equipment for harvest reception to thermovinification, including grape sorting, stalk separation (destemming), crushing, pumping, and conveying. Learn more about the Delta range.



Receiving the harvest 14

Transferring the harvest 32

Sorting the grapes 42

Processing the harvest 56

Receiving the harvest





Trailers	16
Hoppers	18
Destemmers	21
Crushers	28
Stalk splitter	29



Trailers | Delta RV/RVE/REC



Description

The Delta RV/RVE vibrating and tipping trailers are used to receive and transfer the harvest manually or mechanically.

The Delta REC trailer limits maceration during transport (juice less rich in polyphenols) thanks to two side tanks equipped with inspection hatches.

It also offers you the possibility of quickly separating the juices and sulphiting them directly in the bins.

Once at the winery, you can empty the juice bins independently of emptying the hopper.

Advantages

- **Effective:**
 - The harvest is spread out evenly and there is no crushing
 - Effectively drains the released juices
 - Stable during transport (Delta REC)
 - No maceration during transport (Delta REC)
 - Saves time in the winery (Delta REC)
- **Safety:**
 - User safety
- **Maintenance:**
 - Improves hygiene, easy to clean
 - Reduces the need for maintenance and mechanical servicing

	RV 30	RV 40	RV 50	RVE 30	RVE 40	RVE 50
Capacity (hl)	33	43	52	33	43	52
Body width (m)	1.62	2.02	2.22	1.62	2.02	2.22
Loading height (m)		1.76			1.90	
Drainage height of horizontal tray (m)		1.26			2.42	
Drainage height at maximum inclination (m)		1.04			2.17	

Possible configurations for trailers and hoppers

Anti-splash guards

AEV 307 anti-splash guard		434890
AEV 407 anti-splash guard		434833
AEV 507 anti-splash guard		434829
AEV 607 anti-splash guard	800 mm three-sided extension for rear emptying	434881
AEV 510 to 610 anti-splash guard		434858
AEV 807, 1010 to 1510 anti-splash guard		434811
AEV 810 anti-splash guard		434820
AEV 307 anti-splash guard		434893
AEV 407 anti-splash guard		434833
AEV 507 anti-splash guard		448173
AEV 600 anti-splash guard	800 mm three-sided extension for emptying from the long side Right or left reversible	434866
AEV 510 to 610 anti-splash guard		434821
AEV 807.101 to 1510 anti-splash guard		434804
AEV 810 anti-splash guard		434812

Protective covers

Delta RV RVE30* protective cover		400658
Delta RV RVE40* protective cover	Delta RV/RVE vibrating bin cover with hoops For trailers manufactured up to 2020	400659
Delta RV RVE50* protective cover		400660
Delta RV RVE30* protective cover		493248
Delta RV RVE40* protective cover	Delta RV/RVE vibrating bin cover with hoops For trailers manufactured from 2021 and later	493249
Delta RV RVE50* protective cover		493250

Hydraulic power unit

RV RVE autonomous hydraulic power unit	Mounted on a four-wheel stainless steel chassis Power 7.5 kW + 25-litre tank Using standard trailer controls No hydraulic connection to the tractor	400296
RV RVE on-board hydraulic power unit	Power 7.5 kW + 25-litre tank No hydraulic connection to the tractor Caution: the trailer must always be hitched to the tractor No option of raising the trailer without electrical power for models manufactured up to 2020	416217

Grates

RV RVE* 2x20 grate with oblong holes		RVZG1
4 mm grate	Removable grate with bars spaced 4 mm apart	475074

Steps

Folding step for RV RVE*.	Made of galvanised steel. Not suitable for use as a working platform	493101
Folding front step for RV RVE*.	Made of galvanised steel. Not suitable for use as a working platform	RVZ2

Other configurations

Delta RV RVE* tray narrower	Reduces the draining width to 500 mm	RVZ3
Wheels 400/60-15.5 14 PR, original equipment	Pressure 2.5 bars Raises the trailer by 50 mm. Road profile	416956
RV RVE remote electrical control	Equipped with a cable-connected remote control. 12-volt electric control (power supplied by the tractor)	416961
Tank sulphiting system	Only with the drain + tank option 12V control panel + dosing pump	461572
D50 M/F* stainless steel ball valve		401748
Mudguard*		497119
Reversing camera	LCD monitor and IP69 749 camera	497119
Rear hatch for RV/RVE hopper		433797
Gate valve	Stainless steel scoop - cast iron body For controlling the free flow outlet DN65 with pneumatic manual valve and two position sensors	AEVZ3
DIN 65 manual ball valve for AEV		AEVZ4

* Delivered in kit form



Vibrating hoppers | Delta AEV



Description

Delta AEV vibrating hoppers are used to receive and transfer grapes manually or mechanically. They are essential for optimal stalk separation.

Advantages

- **Effective:**
 - The harvest is spread out evenly and there is no crushing
 - Efficiently drains the released juices
- **Safety:**
 - User safety
 - No moving mechanical parts
- **Maintenance:**
 - Improves hygiene, easy to clean
 - Reduces the need for maintenance and mechanical servicing

+ The advantages of our product
 Tailored to the working environment.
 Adaptable to the mode of transport.
 Can be adjusted to fit any type of bin.

	AEV 307	AEV 407	AEV 507	AEV 607	AEV 807	AEV 510	AEV 610	AEV 810	AEV 1010	AEV 1210	AEV 1510
Hopper capacity (hl)	30	40	50	60	80	50	60	80	100	125	150
Length (mm)	4250	4250	4250	4420	4800	4250	4250	4500	4800	4800	4800
Width (mm)	2030	2200	2215	2560	3150	2200	2215	2780	3140	3140	3140
Loading height (mm)	1980	2050	2220	2260	2505	2100	2270	2400	2550	2750	2960



Tipping vibrating hoppers | Delta CV/CVE



Description

The Delta CV/CVE vibrating and tipping hoppers are used to receive and transfer the harvest manually or mechanically.

They supply the destemmers, the sorting tables, as well as the automated sorting systems (Delta Vistalys category), and the presses.

Advantages

- **Effective:**
 - The harvest is spread out evenly and there is no crushing
 - Efficiently drains the released juices
- **Safety:**
 - Ensures the safety of the user (no moving screws)
 - No moving mechanical parts
- **Maintenance:**
 - Improves hygiene, easy to clean
 - Reduces the need for maintenance and mechanical servicing

+ The advantages of our product

Compatible with multiple machines in the production line

Compact

	CV 35	CV 45	CV 55	CV 65	CV 85	CVE 35	CVE 45	CVE 55
Capacity (hl)	33	43	52	65	85	33	43	52
Cylinder volume	1x7 litres	1x7 litres	1x7 litres	-	9 litres	2x7 litres	2x7 litres	2x7 litres
Loading height (mm)	1760	1760	1760	2150	1850	1900	1900	1900
Drainage height of horizontal tray (mm)	1260	1260	1260	1030	1570	2.20	2420	2420
Drainage height at maximum inclination (mm)	1040	1040	1040	980	1480	2170	2170	2170
Width (mm)	1620	2020	2220	2640	3670	1620	2020	2220
Weight (kg)	1350	1400	1450	1781	2500	1650	1700	1750



Archimedes screw hoppers | Delta



Description

The Delta range of Archimedes screw hoppers are used to receive and transfer grapes manually or mechanically.

They supply the destemmers, the sorting tables, and the presses.

The loading is done either in the axis of the screw or perpendicular to it.

Advantages

– Effective:

- The harvest is spread out evenly
- Efficiently drains the released juices
- Handles large volumes

– Maintenance:

- Improves hygiene, easy to clean
- Reduces the need for maintenance and mechanical servicing

+ The advantages of our product
Tailored to the working environment

Capacity (hl)	15 to 350
Archimedes screws diameter (mm)	300 to 600
Dimensions	Made to measure



Rotary cage destemmers | Evolution 2/4/6 and E 8/10



Description

The harvest is brought up to destemming speed gradually and without jolts. The shaft and cage rotate in the same direction to avoid shearing the grapes.

The shaft is offset, which allows the screen to be unclogged and prevents the stalks from being crushed.

Internationally renowned



+ The advantages of our product

Possibility of directly integrating a crusher

Advantages

– Effective:

- Extremely high quality treatment of berries in the fragile harvest configuration
- The berries are preserved intact
- With Pinot noir, the rate of burst berries is reduced from 75% to 25% (in Evolution configuration, specific cage and shaft)
- Equally effective with Pinot blanc, Syrah, Cabernet, Gamay, Riesling

– Safety:

- Safety guaranteed
- The destemmers stop if the side covers are opened

– Maintenance:

- Improves hygiene, easy to clean
- Reduces the need for maintenance and mechanical servicing

	EVOLUTION 2	EVOLUTION 4	EVOLUTION 6	E 8	E 10
Maximum capacity (t/h) with a standard shaft and cage*.	20	30	50 to 55	70 to 80	85 to 110
Length (mm)	2290	2820	2990	3235	3631
Width (mm)	945	1190	1160	1262	1416
Height (mm)	800	1020	1190	1310	1480
Unladen weight (kg)	260	380	560	780	1290

* For information purposes only, variable according to the grape variety, as well as the nature and condition of the harvest (manual or machine).

Possible configurations for rotary cage destemmers

Threshers

Delta Evolution 2 standard thresher for fragile grapes	Capacity 4 t/h Long pins and two propellers	470765
Delta Evolution 2 fragile whole crop thresher	Capacity 4 t/h Short pins and 3 propellers	470766
Delta E2 standard thresher	Long pins and two propellers	4747
Delta E2 whole crop thresher	Short pins and 3 propellers	346914
E4 standard thresher	Equipped with a standard shaft	375279
E4 whole crop thresher		396405
Evolution 4 standard thresher for fragile grapes	Low capacity	486170
Evolution 4 fragile whole crop thresher	Low capacity	486171
E6, E8, and E10 short pin whole crop threshers		-
E6 and E8 long pin whole crop threshers		-
E6, E8, and E10 long reinforced pin mechanical threshers		-

Cages

		Ø 15	Ø 15/18	Ø 15/22	Ø 18	Ø 18/22	Ø 22	Ø 25	Ø 32
Cage made of high-density polyethylene (HDPE) + deflectors Specific to the Delta Evolution 2 for fragile grapes Capacity 4 t/h	Delta Evolution 2 model	470757	470758	470759	470760	470761	470762	470763	470764
	Delta Evolution 4 model	-	-	486161	486163	486162	486164	486165	486166
	Delta E2 old model	391265	393151	389555	380003	390640	380004	380005	391835
	Delta E4 old model	-	-	-	390652	-	380006	380007	415154
Electro-polished stainless steel cage	Delta Evolution 2 model	-	-	-	-	-	-	-	-
	Delta Evolution 4 model	-	-	-	-	-	-	-	-
	Delta E2 old model	-	214470000	214580000	214540000	349413	214550000	214560000	214570000
	Delta E4 old model	-	-	379363	379835	-	375463	375464	383187

Destemmer support chassis

Evolution 2 standard trolley		471342
Evolution 4 standard trolley		487087
Delta E2/Evolution 2 chassis Height 1050 to 1450 mm	Chassis for sorting after stalk separation	-
Delta E2/Evolution 2 chassis Height 1300 - 1620 mm	Chassis for sorting after stalk separation	412719
Delta E2/Evolution 2 chassis Height 1620 - 1940 mm	Chassis for sorting after stalk separation Compatible with the TRV20 Vistalys R1	412720
Shim for Evolution 2 chassis if assembled in the F2 configuration		408384

Hoppers

Evolution 2 screw hopper	0.75 Kw motor with variable speed 470 x 720 mm	492119
Wide hopper for Delta Evolution 2	1200mm x 720mm opening	482498
Evolution 4 screw hopper	0.75 Kw motor with variable speed 580 x 770 mm	486168
Wide hopper for Delta Evolution 4	990 x 1060 mm opening	486169
E6 screw hopper	Power 1.5 kW Length 1400 mm layout 92T006	-
E6 2-way hopper	For E6 + FC6 layout 92T0017	-
E8 screw hopper	Power 1.5 kW	-
E8 2-way hopper		-
E8 draining screw hopper instead of standard	Length 1400 mm	-
E10 screw hopper	Power 3 kW 15	-
E10 F10 screw hopper with trap door		-
Hopper juice outlet E10 for F10	Required with screw hopper	-
Screw hopper juice outlet E8 for FC 8		-

Other configurations

Crusher drive for Evolution 2	Equipment that allows crushing without stalk separation	474412
Rinsing bar	By rotating cannons	214800000
Replacement chutes for E2 and Evolution 2	Allow for this when the destemmer is on a Bucher Vaslin pump	492690
Channelling of the berries without a crusher	For Delta E4, E6, E8	325032

Oscillating cage destemmers | Delta Oscillys

Clean and precise stalk
separation by pendular or
sinusoidal motion



Delta Oscillys 50



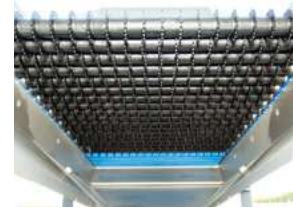
Stalk separation zone

This section has high folded edges which allow the bunches to be moved slightly away from the edge of the cage, greatly reducing juice production.



Arrival of the untreated harvest

The grapes are then separated from their stems in an oscillating cage, without a thresher or shaft.



Separation zone

Berries and stalks are collected on a roller sorter in order to extract all the plant parts from the harvest.



Discharge of the berries

The berry collection process is adaptable to different grape varieties. The user can adjust the oscillation speed and the diameters of the sizer rollers.

Discharge of the stalks

The stalks come out here, without breakage or tearing.

Advantages

– Effective:

- The shape of the cage allows for high-quality stalk separation without taking up too much space
- The sizer rollers can be adjusted while in operation
- Variable roller speed
- Stainless steel chassis on wheels

– Maintenance:

- Rapid cleaning
- Easily accessible lubricators

+ The advantages of our product

Takes up less space: height 1600 mm

Possibility of removing the balancing beams

Distribution rollers at the beginning of the sorter

Low vibration

Low juice output



Delta Oscillys XM / XL



Stalk separation zone

This section has high folded edges which allow the bunches to be moved slightly away from the edge of the cage, greatly reducing juice production.



Harvest input

The grapes are then separated from their stems in an oscillating cage, without a thresher or shaft.



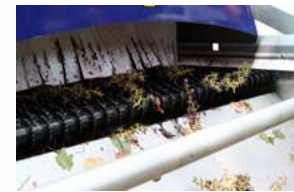
Separation zone

Berries and stalks are collected on a roller sorter in order to extract all the plant parts from the harvest.



Discharge of the berries

The berry collection process is adaptable to different grape varieties. The user can adjust the oscillation speed and the diameters of the sizer rollers.



Discharge of the stalks

The stalks come out here, without breakage or tearing.

Advantages

– Effective:

- The shape of the cage allows for high-quality stalk separation without taking up too much space
- The sizer rollers can be adjusted while in operation
- Variable roller speed

– Maintenance:

- Rapid cleaning
- Easily accessible remote lubricators

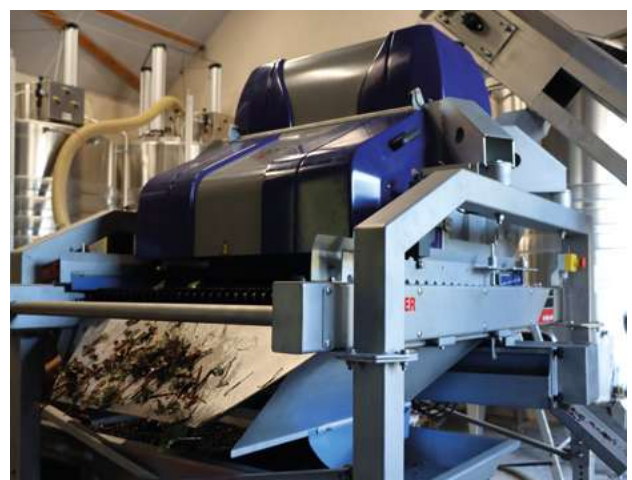
+ The advantages of our product

Takes up less space

Distribution rollers at the beginning of the sorter

Low vibration

Low juice output



Delta Oscillys XM



Video presentation

Delta Oscillys

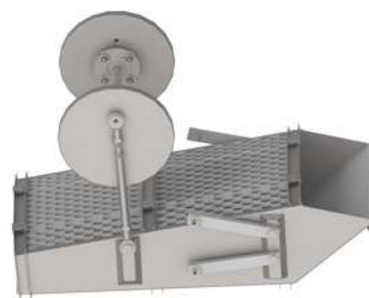
Description of the Delta Oscillys XM and XL

This new exclusive and patented system for stalk separation works without a thresher, destemming shaft, or rotating cage.

Delta Oscillys relies on the high amplitude oscillation of a cage to detach the grapes from the stalk by inertia.

It ensures efficient and high-quality stalk separation while reducing the volumes of juice produced and preserving the condition of the stalk.

The rate of residual plant parts is significantly reduced with Delta Oscillys. It achieves a near-zero ratio of 0.2 to 0.5% compared to 2 to 4.5% for a conventional destemmer.



Our internationally renowned Delta Oscillys system



Commendation

	Oscillys 50	Oscillys XM	Oscillys XL
Maximum capacity (t/h)	Up to 6t/h*	Up to 15t/h*	
Total height (mm)	1600	1470	2485 / +500
Exit height of the "berries" (mm)	460	500	1107 / +500
Length (mm)	2080	1850	2674 / +500
Width (mm)	1170	1550	1768 / +500
Length of cover opening (mm)	1170	2070	2780
Height for hopper tipping (mm)	2080	1980	2806
Height for opening the covers (mm)	1740	1810	2492 (front) 2641 (rear)
Weight (kg)	450	600	1000
Rated electrical power (kW)	1.65	2.05	2.05 (without optional extras) 2.15 (with stalk belt)

* For information purposes only, variable according to the grape variety, as well as the nature and condition of the harvest (manual or machine).

Possible configurations for oscillating cage destemmers

Cages

30mm cage option, original equipment (Oscillys 50)		497116
35mm cage option, original equipment (Oscillys 50)		497117
Additional full cage (Oscillys 50)	DN25	478005
	DN30	478010
	DN35	478011

Hoppers

Oscillys 50 input hopper	For RVE trailer supply 900 x 900 mm	478020
Input hopper + distributors	With distributors Feed dimensions 1000x500 mm	492398

Combs

Spacer comb 17/21 Up to 2019 (Oscillys 50)	Adjustment of the sorting roller spacing from 17 to 21 mm instead of the standard setting of 15 to 19 mm For sorters from Oscillys 50 up to 2019	478012
Spacer comb 17/21 From 2020 and later (Oscillys 50)	Adjustment of the sorting roller spacing from 17 to 21 mm instead of the standard setting of 15 to 19 mm For Oscillys 50 sorters from 2020 and later	487767
Comb 17-21 Trio XM 2020 (Oscillys XM)	Trio/Osc XM roller spacing adjustment from 17 to 21mm instead of the standard 15 to 19mm, retrofit For Trio XM and Oscillys XM from 2020 and later	486325

Chassis

Chassis for TRV 20 (Oscillys 50)	Height 1000-1500 mm	497118
Chassis TRV 20 for Delta Oscillys XM		490514

Other options

Oscillys stalk removal belt	Length 1m90, 300mm smooth band For Oscillys XM only 0.55 Kw motor	492399
Chute with screw box and full roller adjustment	Drainage screw with grate under the first rollers to trap juices as well as waste with a size lower than 2 mm and up to 6 mm with the manual adjustment of the blue spacing rollers Removable tank for washing 510 x 570 mm	492397
Chute under Trio and Oscillys XM + movable separating deflector	Low hopper without a screw box For Trio XM from 2020 and later 590 x 570 mm Delivered in kit form	486330
Chute under Trio XS and Oscillys 50 + movable separating deflector	Low hopper without a screw box 640 x 260 mm For Trio XS from 2020 and later	486322
Drainage box with adjustable roller spacing	480 x 260 mm Drainage screw with a grate under the first rollers to trap juices as well as waste smaller than 2 mm For Oscillys 50 from 2020 and later	487768



Crushers | Delta F



Crusher FC1

Description

Our Delta crushers are equipped with two specific rollers for improved crushing and better extraction during the pressing while preserving the pips.

The spacing of the rollers is clearly visible and can be adjusted by turning knobs.

The supporting bars are lowered to position the crusher on a pump or raised to position it on a 500mm diameter tank door.

Advantages

– Effective:

- Integrated into the environment of the E2, E4, E6, E8 and E10 destemmers
- The roller spacing can be adjusted with no need for special tools
- Option of integrating it at the head of the FC1 and F20 belt
- One-piece rollers with no space between the modules for material to accumulate

– Safety:

- Safety grate in the hopper

	FC1	F20	F2	F4	FC6	FC8	FC10
Maximum capacity with destemmed grapes (t/h)	8	10 to 25	15	20	60	80	100
Maximum capacity with untreated harvest (t/h)	5	3 to 12	12	15	50	70	90
Power (kW)	2 x 225	1.5	Not motorised	1.1	3	3	4



Stalk splitter | Delta BFR

Description

The Delta BFR stalk splitter will allow you to reduce the volume of stalks by up to 80%. It is designed to be integrated with the Evolution 2, Oscillys 50, Oscillys XM, or Oscillys XL destemmers and offers a maximum capacity of 10 t/h for processing the untreated harvest, depending on the grape variety. The separated stalks are used for distillation, spreading, and recycling into biomass.

Advantages

- **Effective:**
 - The volume of stalks is reduced by up to 80%
 - Compact, saves space



Delta Evolution 2
Destemmer

Delta BFR
Stalk splitter

Delta Trio
Roller sorting table

Delta PMV
Pump

Possible configurations for the crushers and the stalk splitter

Hoppers

Delta FC1 hopper under Delta E2		417018
Delta FC1 hopper under TRV35 TBE600		417019
Delta FC1 hopper under standard TRV20		425273
Delta FC1 hopper under TBE 800		417020
Delta FC1 hopper for Oscillys 100		419424
Hopper under Trio XS, Oscillys 50		434779
Hopper under ZT1		453480
Special hopper for crusher		227984
Delta F20 hopper under Delta Evolution2	Delivered in kit form	F20ZT12
Delta F20 hopper Mistral 100 TR TRE	Delivered in kit form	F20ZT21
Delta F20 hopper for Vistalys ZT1 belt	Delivered in kit form	F20ZT22
Delta F20 hopper for Vistalys ZT2 belt	Delivered in kit form	F20ZT23
Delta F20 hopper under Delta TRV35	Delivered in kit form	F20ZT31
Delta F20 hopper under Delta TBE600	Delivered in kit form	F20ZT32
Delta F20 hopper under Delta TBE800	Delivered in kit form	F20ZT33
Delta F20 hopper under Oscillys 200	Delivered in kit form	421891
Delta F20 hopper under Delta Trio XM	Delivered in kit form	450924
F20 hopper under Trio XL without drainage box	Delivered in kit form	483861
F20 hopper under Trio XL with drainage box		457001
BFR crusher hopper under Chassup E2	For BFR without chassis extension Height under chassis E2 1100mm	417657
BFR hopper with extension under Chassup E2	For BFR with extension under E2 chassis	430911
BFR crusher hopper under E2 maxi chassis	For BFR without chassis extension Height under chassis E2 1400mm	430912

Trolleys

Stainless steel trolley for Delta FC1 crusher	Delivered in kit form	417023
Adapter for DELTA FC1 crusher at the end of the ZT1 belt	Delivered in kit form	486337
Stainless steel trolley for Delta F20 crusher	Delivered in kit form	F20ZG1
Chassis F 20 - 90°	Compatible with Delta PMV2 and PMV4 pumps Delivered in kit form	457000

Other options

Chassis extension + juice collection box	Height adjustable from +135 to +334 mm	425630
--	--	--------





Transferring the harvest



Conveyors

34

Pumps

36



Conveyor belt systems | Delta TRE / ELVTR



Description

TRE and ELVTR conveyor belt systems allow you to:

- Supply your destemmers, sorting tables, presses, and fermentation vats with fresh grapes
- Supply the presses with macerated grapes
- Remove the destemmed stalks and dried pomace

Advantages

- **Sturdy:**
 - 100% stainless steel construction
 - Conveyor belt with curved slats
- **Adaptable:**
 - Conveyor belt mounted on a trolley with hydraulic lift by manual pump
 - Conveyor belt speed variable from 0.3 to 0.65 m/s
- **Easy to clean:**
 - Removable conveyor belts
 - A scraper for the inside of the conveyor belt

+ The advantages of our product

Available in three lengths (3m, 4m, and 5m) for TREs and customised for ELVTRs



Oil pump of an ELVTR

Possible configurations for conveyors

Hoppers

ELVTR300 E2 receiving hopper*	Allow for a minimum height of 700 mm under E2	ELVTR300ZT1
Receiving hopper ELVTR300 tank door*	Allow for a minimum height of 500 mm under the tank door	ELVTR300ZT2
ELVTR300 screw-type receiving hopper*	Minimum height of 500 mm under the outlet of the screw-type hopper	ELVTR300ZT3
ELVTR300 TRV TBE receiving hopper*	For vibrating or conveyor-belt sorting tables	ELVTR300ZT4
ELVTR300 1200x875 receiving hopper*	High capacity hopper 1200 mm x 875 mm	ELVTR300ZT5
ELVTR300 receiving hopper for trailer*	Flat hopper for trailer Assisted discharge	ELVTR300ZT6
ELVTR300 receiving hopper under TRV 20 and 25*	TRV 20 & 25 receiving hopper 1000mm x 795 mm	480015
ELVTR300 quick release hopper system	Non-sealed hopper with quick release system Not compatible with the ELVTR300ZT5 and ELVTR300ZT hoppers	ELVTR300ZTDR
ELVTR400 E2 receiving hopper*	Allow for a minimum height of 700 mm under E2	ELVTR400ZT1
Receiving hopper ELVTR400 tank door*	Allow for a minimum height of 500 mm under the tank door	ELVTR400ZT2
ELVTR400 screw-type receiving hopper*	Minimum height of 500 mm under the outlet of the screw-type hopper	ELVTR400ZT3
ELVTR400 TRV TBE receiving hopper*	For vibrating or conveyor-belt sorting tables	ELVTR400ZT4
ELVTR400 1300x875 receiving hopper*	High capacity hopper 1300 mm x 875 mm	ELVTR400ZT5
ELVTR400 receiving hopper for trailer*	Flat hopper for trailer Assisted discharge	ELVTR400ZT6
ELVTR400 receiving hopper under TRV 20 and 25*	TRV 20 & 25 receiving hopper 1000mm x 795 mm	480016
Delta ELVTR400 hopper for bins	Hopper for unloading bins on Delta TR400 1500 mm x 1200 mm	400343
ELVTR400 quick release hopper system	Non-sealed hopper with quick release system Not compatible with the ELVTR400ZT5, ELVTR400ZT6, and 400343 hoppers	ELVTR400ZTDR
TRE300 E2 de-vatting receiving hopper*		TREZT1
TRE300 receiving hopper, sorting table*		TREZT2

Chutes

Swivel outlet chute ELVTR300/400 TRE L.1m*	416243
Swivel outlet chute ELVTR300/400 TRE L.1.5m*	416244
Swivel outlet chute ELVTR300/400 TRE L.2.0m*	416245

Other

Washing bar return line	Compatible with ELVTR300, ELVTR400	408382
Flexible sleeve outlet ELVTR/TRE300*	Length 1 m	410808
Flexible outlet sleeve for ELVTR400*	Length 1 m	ELVTR400MS
Din 50F/Macon 50M adapter*		RACDIN50MAC50

* Delivered in kit form

For each hopper delivered, there is an additional charge for the quick release system.



Our pump systems

The Delta range of pumps lets you transport the destemmed grapes, as well as transfer the vatted pomace and the wine.

Delta DP

The Delta DP pump is a peristaltic pump that performs two functions: a grape harvest pump and a wine pump.

DP peristaltic pumps offer minimal crushing of the grapes. Its smooth and continuous transport enables a high-quality transfer of the destemmed grapes and the wine (dual function).

Its safety features include a safety mechanism when running dry. Delivered with a compatible washing grate, it requires little maintenance and ensures optimal hygiene.

✚ The advantages of our product

DP pumps are self-priming to a depth of 7 metres. They can also be combined with a feed hopper.



Delta PMV

At the heart of the winemaking process, Delta PMV pumps ensure the reception of fresh grapes and can be adapted to transfer vatted pomace.

PMV pumps ensure minimal crushing of the grapes. Its safety features include a safety mechanism when running dry. Delivered with a compatible washing grate, it requires little maintenance and ensures optimal hygiene.

✚ The advantages of our product

Delta PMV pumps are equipped with high-quality, FDA-certified geared motors and a rotor-stator assembly developed by Bucher Vaslin. Their speed is variable and they can be fitted with two level sensors for continuous operation.



Delta PVE & CP | pumping hopper

Identical to the Delta PMV and PM, the PVE and CP pumps are placed at the level of the hoppers.

PVE pumps are placed either under the tanks or in suction mode as a replacement for piston pumps. They can also be positioned under the Delta Extractys.

The CP pumps are placed at the outlet of the hopper.



Delta Flex

Positive volumetric pumps with flexible impellers, slow or fast speed.

Flex pumps are used for the transfer of juice and wine.

The low speed of the Flex pumps means that the seeds and pulp are not destroyed.

They are reversible and self-priming. Pumps can be single or dual speed, or run with a frequency regulator. The soft impellers are made of food-grade neoprene.

+ The advantages of our product

Slow speed Flex pumps are used in particular for:

- wine pumping
- descaling
- filtering
- casking
- bottling



Delta Twin

Pumps with double eccentric rotary piston and low speed.

Twin pumps are used for the transfer of juice and wine.

Its suction power allows it to reach up to 8 metres dry, which offers the possibility of transferring material over a long distance.

Twin pumps can be used to pump viscous liquids.

Easy to clean and maintain.

+ The advantages of our product

Twin pumps are used in particular for:

- wine pumping
- transferring
- filtering
- casking
- bottling
- lees
- must
- wines



Delta LOB

LOB pumps are wonderfully versatile.

Our pumps are hard nitrile lobed and food safe. They can receive solid particles up to 50 mm in diameter.

The LOB pumps are self-priming and go up to 8 metres dry.

They are very gentle on the wine by ensuring a continuous flow without mixing.

+ The advantages of our product

LOB pumps can withstand a wide range of temperatures (from -10°C to 90°C) and pressures (from 4 to 10 bars depending on the model).

In particular, they are used for:

- pumping wine, transferring, filtering
- casking
- bottling
- the de-stemmed harvest
- lees
- must with solid particles
- liquid pomace
- juices
- wines
- draining the pipes after transfers
- filling tanks



PMV / PM pumps

	PMV 2	PMV 4	PMV 4 VAR	PMV 4 VAR low capacity	PM6V mono 9kw	PM6V mono 11kw	PM6M mono 9kw	PM6M mono 11kw	PM6 VAR 9kw	PM6 VAR 11kw	PM8 mono 11kw	PM8 mono 15kw	PM8 VAR 11kw	PM10
Maximum capacity (t/h) with destemmed grapes	20	30	10 to 30	3 to 16	60	-	-	-	30 to 60	-	80	-	40 to 80	130
Maximum capacity (t/h) with destemmed vatted pomace	10	15	10 to 15	-	-	-	30	-	-	-	40	-	20 to 40	60
Length (mm)	2254	2272	2272	2272	-	2550	-	-	2750	-	2820	-	-	-
Width (mm)	715	715	715	715	-	800	-	-	800	-	800	-	-	Made to measure
Height (mm)	970	1021	1021	1021	-	1160	-	-	1160	-	1170	-	-	-

DP pumps

	DP01	DP02	DP03	DP04
Wine capacity (hl/h)	15 to 50	30 to 75	55 to 170	100 to 350
Length (mm)	1085	1111	1350	1581
Width (mm)	465	520	550	724
Height (mm)	902	1016	1185	1532



Flex pumps

	Flex 35/70	Flex 50/100	Flex 70/140	Flex 90/180	Flex 110/220	Flex 140/280	Flex 170/340	Flex 300/600	Flex 5/140 Var Elec	FLEX 15/240 Var Elec	FLEX 15/260 Var Elec	FLEX 25/400 Var Elec	FLEX 50/700 Var Elec
Wine capacity (hl/h)	35 to 70	50 to 100	70 to 140	90 to 180	110 to 220	140 to 280	170 to 340	300 to 600	5 to 140	15 to 240	15 to 260	25 to 400	50 to 700
Length (mm)	1018	1018	1043	1043	1043	1130	1127	1018	1020	1134	1127	1240	1208
Width (mm)	370	370	370	370	370	370	370	440	376	346	346	412	440
Height (mm)	720.5	720.5	720.5	720.5	720.5	720.5	720.5	920	721	826	826	810	910

Twin pumps

	Twin 100	Twin 300
Wine capacity (hl/h)	5 to 100	30 to 300
Length (mm)	1100	1400
Width (mm)	450	600
Height (mm)	800	950

LOB pumps

	LOB 200	LOB 300	LOB 600	LOB 1000
Wine capacity (hl/h)	15 to 240	30 to 340	60 to 660	80 to 1100
Length (mm)	1240	1480	1580	1800
Width (mm)	610	610	650	750
Height (mm)	1000	1000	1000	1000



Possible pump configurations

Adapters

	Delta FLEX	TWIN	Delta LOB 100	Delta LOB 200	Delta LOB 300	Delta LOB 600	Delta LOB 1000
40 Macon connector	492278	492308	-	-	-	-	-
50 Macon connector	492279	492309	492219	492219	-	-	-
70 Macon connector	492280	492310	-	-	492220	492220	-
80 Macon connector	492281	492311	-	-	492221	492221	-
100 Macon connector	492282	-	-	-	-	-	492222
40 DIN connector	492283	492312	-	-	-	-	-
50 DIN connector	492284	492313	-	492223	-	-	-
65 DIN connector	492284	492314	-	-	492224	492224	-
80 DIN connector	-	492315	-	-	492225	492225	-
100 DIN connector	-	-	-	-	-	-	492226
125 DIN connector	-	-	-	492227	-	-	-
40 SMS connector	492286	492316	-	-	-	-	-
50 SMS connector	492287	492317	-	492228	-	-	-
63 SMS connector	492288	492318	-	-	492229	492229	-
76 SMS connector	492289	492319	-	-	492230	492230	-
100 SMS connector	-	-	-	-	-	-	492231
15/21 GAS connector	492277	-	-	-	-	-	-

Grates

DP intermediate grate for E2/F2	Delivered in kit form	439782
PMV intermediate grate for E2/F2- E4/F4	Equipped with electric safety interlock Mandatory if used under an E2, Evolution2, E4, Evolution4 Delivered in kit form	260830000
PMV intermediate grate for Oscillys100/200	Mandatory if used under an Oscillys Delivered in kit form	421913
De-vatting grate for PMV	Equipped with electric safety interlock Delivered in kit form	260860000

Blades

Ø40 vibratory blade		492246
Ø50 vibratory blade	Vibratory blade protection against lack of liquid Only available on pumps with an electronic speed regulator	492247
Ø65 vibratory blade		492248
Ø100 vibratory blade		492249

Pressure and vacuum switches

Delta DP pump suction vacuum switch	Suction-mounted vacuum switch for Delta DP pump Delivered in kit form	400354
Mechanical pressure switches X2*	Inlet and outlet pressure switches (casking or safety) (x2)	492093
Pressure + vacuum switch*		492234
Analogue pressure switches X2*	Dual analogue pressure switches	492236

Radio & remote control

Wireless remote control for Delta DP pumps	On/off switch and variable speed Range 100 m in unobstructed space Voltage 360 / 480v IP65 protection rating against dust and water ingress Delivered in kit form	442012
Compelec33* - Remote control with fixed display on pump (flow rate display)	Range 400 metres Functions: on/off/reverse direction/flow variation	492095
Compelec37* - Radio remote control with display screen (displays rate and direction of flow)	Range 1 km Functions: on/off/reverse direction/flow variation	492232
Compelec31* - Wired remote control	30 m cable	492233

* Only available on pumps with an electronic speed controller

Hopper extensions

Hopper extension height 250 for DP		425275
Hopper extension height 500 for DP		425277
Hopper extension height 250mm for Delta PMV		413535
Hopper extension height 500 for PMV		PM4ZR1
PMV hopper extension under Trio XL	With drainage box Without drainage box	470287 470288
Hopper extension height 500 for PM6		PM6ZR1
Hopper extension height 500 for PM8		PM8ZR1

Sensors

Level sensor for the Delta DP pump		449112
HF scanning level sensor PMV1/2/4*	Harvest settings	449111
Scanning sensor with pomace settings*	For pomace	470094
HF scanning level sensor pump PM 24V	For the harvest	449110
Two timed high and low level sensors	Pumping hopper PM Relay supplied	
Control console for HF level sensor		460052

Hoppers

DP hopper assembly kit	For pre-2018 pumps	480419
Delta DP02 variable speed screw hopper	Screw feed hopper, stainless steel chassis 0.55 kW variable speed motor, DIN 50 output	409930
Delta DP03 variable speed pump hopper	Screw feed hopper, stainless steel chassis 0.55 kW variable speed motor, DIN 65 output	409932
Delta DP04 variable speed pump hopper	Screw feed hopper, stainless steel chassis 0.75 kW variable speed motor, DIN 80 output	409934
Reversing switch for DP variable speed hopper	Allows the direction of travel of the hopper to be reversed Only on variable speed hoppers	452439
PM 6 hopper under Trio XXL with box*.	With screw-on drainage box on the Trio XXL	477999
PM 6 hopper under Trio XXL without box*.	With a standard hopper on the Trio XXL	477998
Hopper for the LOB 200 pump	Screw feed hopper, stainless steel chassis Variable speed motor 0.55 kW, output DN120	490476
Hopper for the LOB 300 pump	Mobile hopper with four swivel wheels	490478
Hopper for the LOB 600 pump	Screw feed hopper, stainless steel chassis Variable speed motor 0.75 kW, output DN120 Mobile hopper with four swivel wheels	490480

Valves

Ø40 motorised high-speed valve		492094
Ø50 motorised high-speed valve		492237
Ø65 motorised high-speed valve		492238
Ø70 motorised high-speed valve	High speed butterfly valve kit (1s closing) with actuator and coupling	492239
Ø80 motorised high-speed valve		492240
Ø100 motorised high-speed valve		492241

Other configurations

Delta PM8 motorised agitator	Supplied with a 250 mm extension	AVPM8
Inverted drawbar pump PMV from 2019 and later	For Delta PMV1VAR and PMV4VAR pumps with variable speed Changing the position of the electrical box above the stator	461544
Delta PM6 motorised agitator		AVPM6
Ball outlet DN 120 M Delta PM6		416256
Ball outlet DN 150 M Delta PM6		416257
Ball outlet DN150 M Delta PM8		416258
Ø40 built-in counter		492242
Ø50 built-in counter		492243
Ø65 or Ø70 built-in counter	Only available on pumps with an electronic speed regulator	492244
7" touchscreen with PLC		492245

* Delivered in kit form



Sorting the
grapes

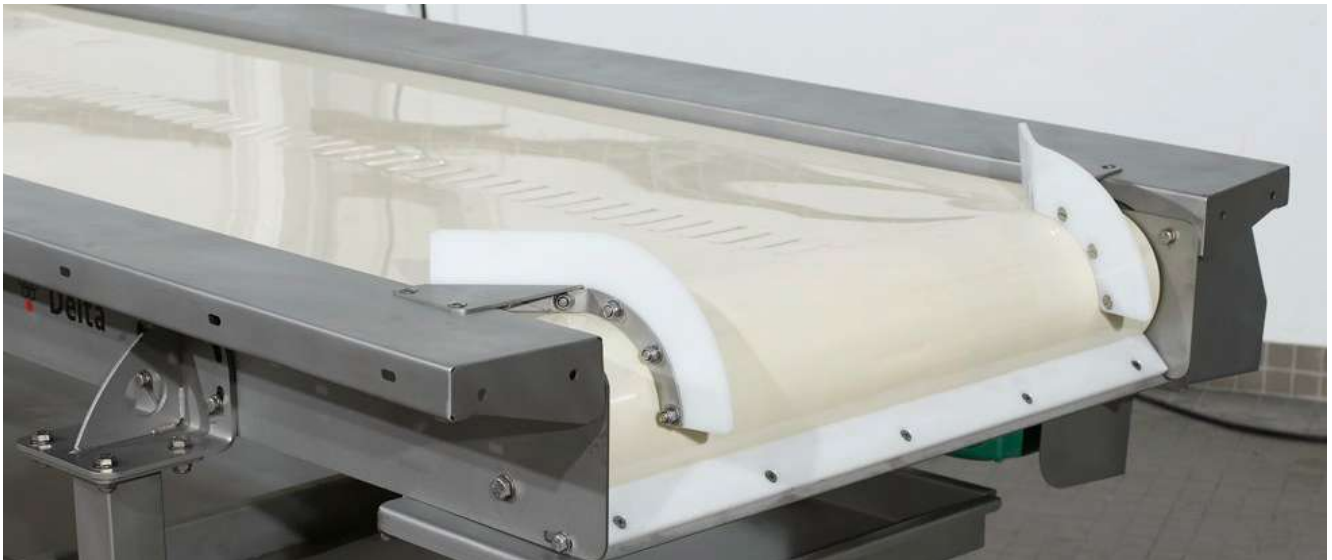


Manual 44

Mechanical 45

Densimetric 50

Optical 52



Sorting table with conveyor belt | Delta TBE



Description

The Delta TBE conveyor-belt sorting table is designed to make manual sorting easier. It provides a steady feed to the downstream equipment in the reception chain (destemmer, crusher, pump)

Depending on the model, it is possible to have between 6 and 12 sorters around this table.

Advantages

- **Effective:**
 - Efficient harvest transfer with a range of options to make manual sorting easier and more effective
 - Quick and easy manoeuvres
 - Few areas for sediment to accumulate
- **Safety:**
 - Guaranteed stability
- **Maintenance:**
 - Quick release belt system for easy cleaning

✚ The advantages of our product

As an option, it is possible to sort with three adjustable lanes and a lighting strip can be added.

	TBE
Variable speed geared motor (m/min)	3 to 8
Length (mm)	3500 to 6500
Total height Min./Max. (mm)	910
Width (mm)	1186



Vibrating sorting table | Delta TRV



Description

The Delta TRV vibrating sorting table lets you separate the noble product from the released juices and plant debris (damaged berries, leaf stems, diseased berries, insects, etc.). Its two vibrating motors spread out the harvest evenly to make manual sorting easier. Depending on the model, the Delta TRV table offers the possibility of having between four and six sorters around it.

Advantages

- **Effective:**
 - Simple and quick manoeuvres - Practical recovery of released juices and plant debris
 - Self-evacuating grate for all small plant waste (verjuice, damaged berries, etc.) so that clean musts can be obtained
- **Safety:**
 - Stability guaranteed
- **Maintenance:**
 - Easy cleaning
 - Few areas for sediment to accumulate

	TRV 20	TRV 25	TRV 35
Maximum capacity (t/h)	10 to 12	20 to 25	8
Drainage surface	0.7 m ²	1.4 m ²	0.90 m ²
Height (mm)	1100	1360	950
Length (mm)	2000	2550	3500
Width (mm)	1350	1620	950



Sorting table | Delta Trio



Description

Delta Trio is a roller sorter with a vibrating hopper. Depending on the model, the sorting table offers several systems for distributing and diverting the harvest.

It is also equipped with a grading preparation system, allowing the harvest to be directed onto the table and the pips and released juice to be separated. Lastly, Delta Trio offers adjustable spacing on the last rollers.

+ The advantages of our product

- Rate of debris remaining in the harvest after processing between 0.2 % and 2.5 % *
- 80-100% removal of leaf tails*
- Strong action on large plants (machine harvesting)
- No action on clinging berries

**Depending on the grape variety and the conditions of use*

Advantages

- **Effective:**
 - Very effective on leaf tails and large bunches
 - Bucher Vaslin patented roller spacing adjustment system
 - Variable roller speed
 - No crushing of the berries (arm 2 cm from the rollers)
 - Adaptable to all feed set-ups: vibrating hopper, destemmer, screw hopper, etc.
- **Maintenance:**
 - The trough and spiral can be removed for cleaning

International renown



	Trio XS	Trio XM	Trio XL	Trio XXL
Maximum capacity with destemmed grapes (t/h)	6	15	25	60
Available height under the table Min./Max. (mm)	460 / 960	570 / 1070	540 / 1040	540 / 1040
Total height Min./Max. (mm)	1000 / 1500	1390 / 1890	1210 / 1710	1210 / 1710
Length (mm)	1780	1860	2480	2500
Width (mm)	1160	1550	1560	1560



Air blade sorting table | Delta RFlow

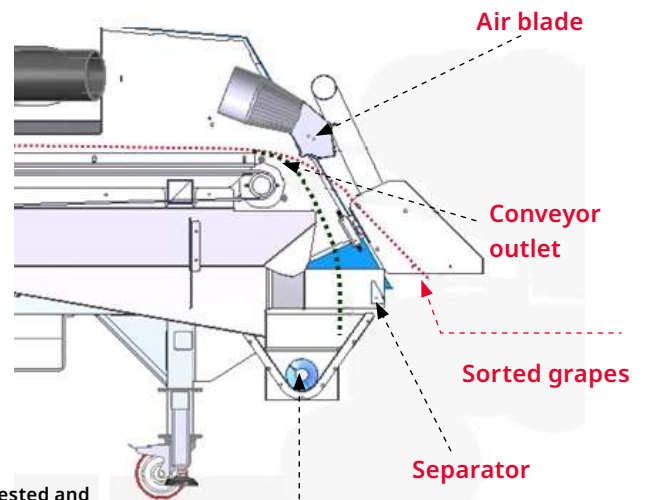


Description

The Delta RFlow air blade sorting table handles destemmed grapes, either manually or by machine. Its high-speed automatic sorter can handle up to 15 metric tons of grapes per hour. Its air blade function deflects the trajectory of rejected material (leaves, pieces of stalk, leaf stems, pips, skins, verjuice, sultanas, diseased berries, etc.). Equipped with a spiked belt, it handles the grapes with more stability. The plant debris is transported to a centralized waste collection system.

Advantages

- **Effective:**
 - Removal of plant debris (leaf stems, leaves, etc.) and diseased berries, sultanas, pips, skins, etc.
 - Removal of insects
 - Recovery of the released juices



International renown



	Machine harvesting	Hand harvested and destemmed
Rejection rate	4% to 6.5%	3% to 5.5%
Waste removal	Little loss of whole berries 80% of skin and pips removed 50-80% removal of leaf tails No action on large plants Little action on clinging berries	Removal of stalk pieces

Possible configurations for manual and mechanical sorting tables

Adapters

Din 50F/Macon 50M adapter		RACDIN50MAC50
DIN 70 female to male adapter		RACDIN70MAC70

Spreader arm

Spreader arm kit, retrofit* 2017/2019	Motorised distribution system Only for Trio XM equipped with solid rollers	458114
Spreader arm for TRIO, original equipment XM 2020	Motorised distribution system	486329
Spreader arm for TRIO, retrofit XM 2020	Motorised distribution system Only for Trio XM equipped with solid rollers	486331

Boxes

Screw box for TRIO XS 2020	Drainage screw with grate under the first rollers to trap juices as well as waste with a size lower than 2 mm and up to 6 mm with the manual adjustment of the blue spacing rollers Removable tank for washing Factory fitted to new equipment 480 x 260 mm outlet hopper	486328
Trio XS screw-action drainage box 2017/2019*	Drainage screw with a grate under the first rollers to trap juices as well as waste smaller than 2 mm	478041
Screw-action drainage box with full roller spacing adjustment* 2020	Drainage screw with a grate under the first rollers to trap juices as well as waste with a size lower than 2 mm and up to 6 mm with the manual adjustment of the blue spacing rollers Removable tank for washing 470 x 570 mm hopper outlet	486327
Trio XM screw-action drainage box 2017/2019	Drainage screw with a grate under the first rollers to trap juices as well as waste smaller than 2 mm Tipping trough	463079
TRIO XL 2020 screw-action box	Bin with discharge screw under the first rollers to trap juices and waste smaller than 2mm 570 x 1170 mm hopper outlet	486332
Trio XL drainage box 2017- 2019	Bin with discharge screw under the first rollers to trap juices and waste smaller than 2mm	450951
Screw-action drainage box	Bin with discharge screw under the first rollers to trap juices and waste smaller than 2mm Hopper 1170 x 570 mm	477996

Chassis and chassis extensions

300mm chassis extension for turner	300mm chassis extension for automatic box turner, compatible with TRV35, TBE	SUPPORTERS
Evolution 4 chassis fixed on TRIO XM* 2020	Delta Evolution 4 support chassis fixed above the Trio XM for Trio XM	486326
Trio E2 pivot* 2017/2019 chassis extension	Delta E2 support chassis equipped with a pivot allowing the Delta E2 to be retracted for direct feeding of the Delta Trio XM	464876
Trio Evolution 2 chassis extension for Trio XM 2020	Delta Evolution 2 support chassis equipped with a pivot to retract the Delta E2 for direct feeding of the Delta Trio XM	486323
Trio frame extension for E2 fixed* 2017/2019	Delta E2 support chassis fixed above the Trio XM	464874
Trio Evolution 2 chassis extension fixed for TRIO XM 2020	Delta Evolution2 support chassis fixed above the Trio XM	486324

Chutes

Chute under Trio XS and Oscillys 50 + 2020 movable separating deflector	Low hopper without a screw box 640 x 250 mm	486322
Trio XM chute + 2020 mobile separating deflector*	Low hopper without a screw box 590 x 570 mm	486330
Chute under E2 for Trio XM with E2 chassis extension/spreader arm*.	For Trio XM, kit to be added to the order to allow the fitting of the spreader arm under the Trio E2 fixed or pivoting chassis extension option Motorised distribution system Only for Trio XM equipped with solid rollers	464877

Belts

Delta Rflow elevator belt	In-line sorted berry discharge conveyor belt Elevation 1100 mm	435368
Rflow waste removal conveyor belt	Waste auger Discharge height 1100 mm	436624

Combs

17-21mm spacer comb for Trio XS/XM*	Trio roller spacing adjustment from 17 to 21mm instead of the standard 15 to 19mm	464872
17-21mm comb for Trio XM 2020		486325
17-21mm comb kit for Trio XS	Trio roller spacing adjustment from 17 to 21 mm instead of the standard 15 to 19 mm, retrofit For Trio XS from 2020 and later	486321
17-21mm kit for Trio XL	Trio XL roller spacing adjustment from 17 to 21mm instead of the standard 15 to 19mm For Trio XL from 2020 and later	486333
17-21mm kit, retrofit*	Trio XL roller spacing adjustment from 17 to 21mm instead of the standard 15 to 9mm, retrofit For Trio XL manufactured between 2017 and 2019	468933
22 to 26mm comb kit	For machine harvest sorting Maximum capacity: up to 60 t/h depending on the grape variety, the condition of the harvest, and the feed set-up Trio XXL roller spacing adjustment from 22 to 26mm instead of the standard setting For Trio XXL from 2019 and later	477997

Grates

Drainage grate 2 x 20*	Removable with oblong holes 2 x 20mm for TRV20 and TRV25	TRV20ZG1G
4 mm drainage grate*	Removable with trapezoidal bars with 4mm clearance for TRV20, TRV25, and TRV35	TRV20ZG4G TRV35ZG4
6 mm drainage grate*	Removable with trapezoidal bars with 6mm clearance for TRV20, TRV25, and TRV35	TRV20ZG6G TRV35ZG6
8 mm drainage grate*	Removable with trapezoidal bars with 8mm clearance for TRV20, TRV25, and TRV35	TRV20ZG8G TRV35ZG8
Removable grate TRV35*	With oblong holes 2x20mm	TRV35ZG1G
TRV* self-evacuating waste grate	With oblong hole grates 2 x 20mm	TRV35ZGA

Narrowers

TRV20/TRV25 narrower with joint*		TRV20Z9
TRV35 narrower with joint		TRV35Z9

Box holders

Box holder for Delta TRV20*		TRV20ZC
Box holder for TRV35 without hopper		TRV35ZC
Box holder for TRV35 with hopper		TRV35ZC1

Hoppers

Standard 4-sided receiving hopper TBE800		TATBE800ZT1
High capacity hopper for Delta TRV20	1800 x 1700 x 1730 mm Not compatible with TRV20Z9 narrowers and TRV20ZD1 distributors	TRV20ZT2
High capacity hopper for TRV25	On mobile chassis 1750 x 1730 x 2220 mm	440456
High capacity hopper for TRV25	On TRV chassis	475044
Standard 4-sided receiving hopper TRV35*		TRV35ZT1
Hopper for TRV35 bins*		TRV35ZT2

Other configurations

Electric box turner	Automatic box turner, compatible with TRV35, TBE	RETCAISSE
Remote speed control with TRV35 console		TRV35ZVD
Washing and drying bar for Delta TRV35	1 bar with nozzles and 1 drying fan	492435
Positive sorting system for Delta TRV 35	System dividing the sorting surface into three channels: - a central corridor for the selected grapes - two side channels for the rejected grapes The equipment can be fitted to TRV35 single and dual grates from the 2005 model and later Capacity 3 to 4t/h	461517
E4/Evolution 4 destemmer stand on Trio XXL		484867
Delta Rflow* washing bar		433679

* Delivered in kit form



Density sorting table | Delta Densilys

Description

The ideal machine for sorting your harvest by density.

Delta Densilys can sort both destemmed and whole grapes. It's all about the liquid!

Once the bath is ready in the hopper, the ripest berries will sink to the bottom and be picked up by the conveyor belt.

The floating material will be removed by overflow.

Advantages

– Effective:

- Removes all floating waste
- Quick set-up thanks to four large diameter stainless steel wheels and levelling skids
- A patented conveyor belt that ensures that the grapes are drained and conveyed in an environmentally friendly manner

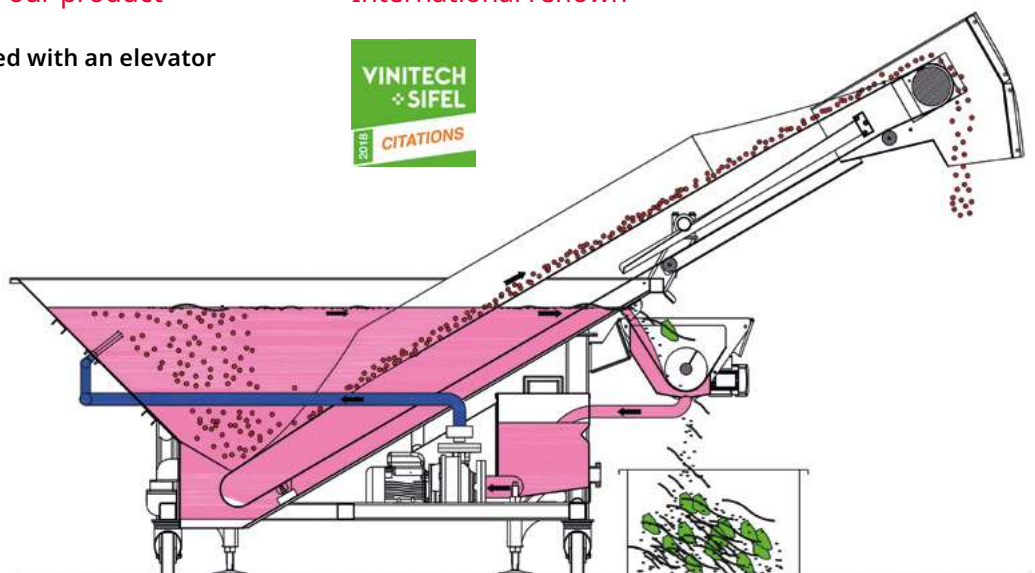
– Maintenance:

- Conveyor tilting by hydraulic cylinder for washing and transport

+ The advantages of our product

- Easy to use
- Compact and equipped with an elevator

International renown



Video presentation



Berry elevator

The conveyor picks up the ripest berries and carries them up to the next machine.



Berries outlet

HOPPER

The liquid (juice, sugar water, or clear water) and the berries are contained in the hopper in order to sort the harvest.



Hydraulic pump

This pump makes it possible to tilt the belt according to its use.



	Densilys XS	Densilys XM
Maximum capacity with destemmed grapes (t/h)	6	12
Maximum capacity for washing the untreated harvest (t/h)	3	6
Hopper capacity (hl)	7.5	10
Height of raised / lowered conveyor belt (mm)	2430 / 1420	2430 / 1420
Available height at berry outlet (mm)	1930	1680
Available height at waste outlet (mm)	710	700
Length (mm)	3990	3940
Width (mm)	1800	2460

Possible configurations for Delta Densilys

Buffer tank ball valve outlet DIN40	For densilys XS and XM	470433
Main tank ball valve outlet DIN80	For densilys XS and XM	470434
Anti-splash side extensions	For Densilys XS	470435
Densilys XM extension	For Densilys XM	486185
Low-level circulation system	For densilys XS and XM	486196 486195
Harvest drying system	For densilys XS and XM	486473 486474



Optical sorting table | Delta Vistalys

Description

The specific feature of the Vistalys process is based on technological choices opted for by Bucher Vaslin to use a precise and fully automatic optical sorting system specially developed and adapted for grape harvests. The Delta Vistalys table allows you to define the sorting level by varying the colour and shape settings of the objects. This lets you control the machine or manually destemmed harvest.

Advantages

- **Effective:**
 - Removes unwanted items automatically
 - High productivity: up to 10 t/h
 - Machine connection for the possibility of remote control via the hotline
- **Maintenance:**
 - Easy to clean and maintain

+ The advantages of our product

- Consistent sorting process
- Highly precise
- Easy to use

International renown



	Delta Vistalys HD
Max. capacity t/h (depending on the variety)	15
Compressed air requirement	40m ³ at 6 bars
Height (mm)	2300
Length (mm)	2430
Width (mm)	1810

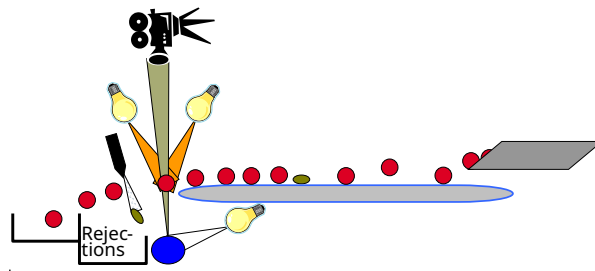


Video presentation



ZT1 conveyor belt

This axial belt is dedicated to the discharge of berries



Harvest processing

The combination of camera and lighting provides optimal sorting of the harvest

Arrival of the harvest



ZT2 conveyor belt

This conveyor belt is dedicated to the discharge of waste material



PLC

The colour touchscreen allows the user to set the various sorting parameters.



Possible configurations for the Delta Vistalys

Connectivity

4.0 connectivity	4G connectivity Applicable for Vistalys HD	496096
------------------	---	--------

Pump

Variable speed Delta PMV4 pump for Vistalys	Variable capacity from 3 to 16 t/h Compatible electrical safety mechanism and safety grate on reversible hopper specific to the Vistalys HD Motor in the pump axis Hopper discharge DIN 50 Ball outlet connector 120 Trolley-mounted Interior dimensions of the hopper: length 1500 mm width 660mm	400298
---	--	--------

Conveyor belts

Delta Vistalys HD axial conveyor belt	For collecting sorted grapes Elevation 1100 mm Power 0.225 kW	VISTALYSR2ZT1
Delta Vistalys HD cross conveyor belt	For removing unwanted berries and waste material Elevation 1100 mm Power 0.75 kW	VISTALYSR2ZT2

Chassis extension

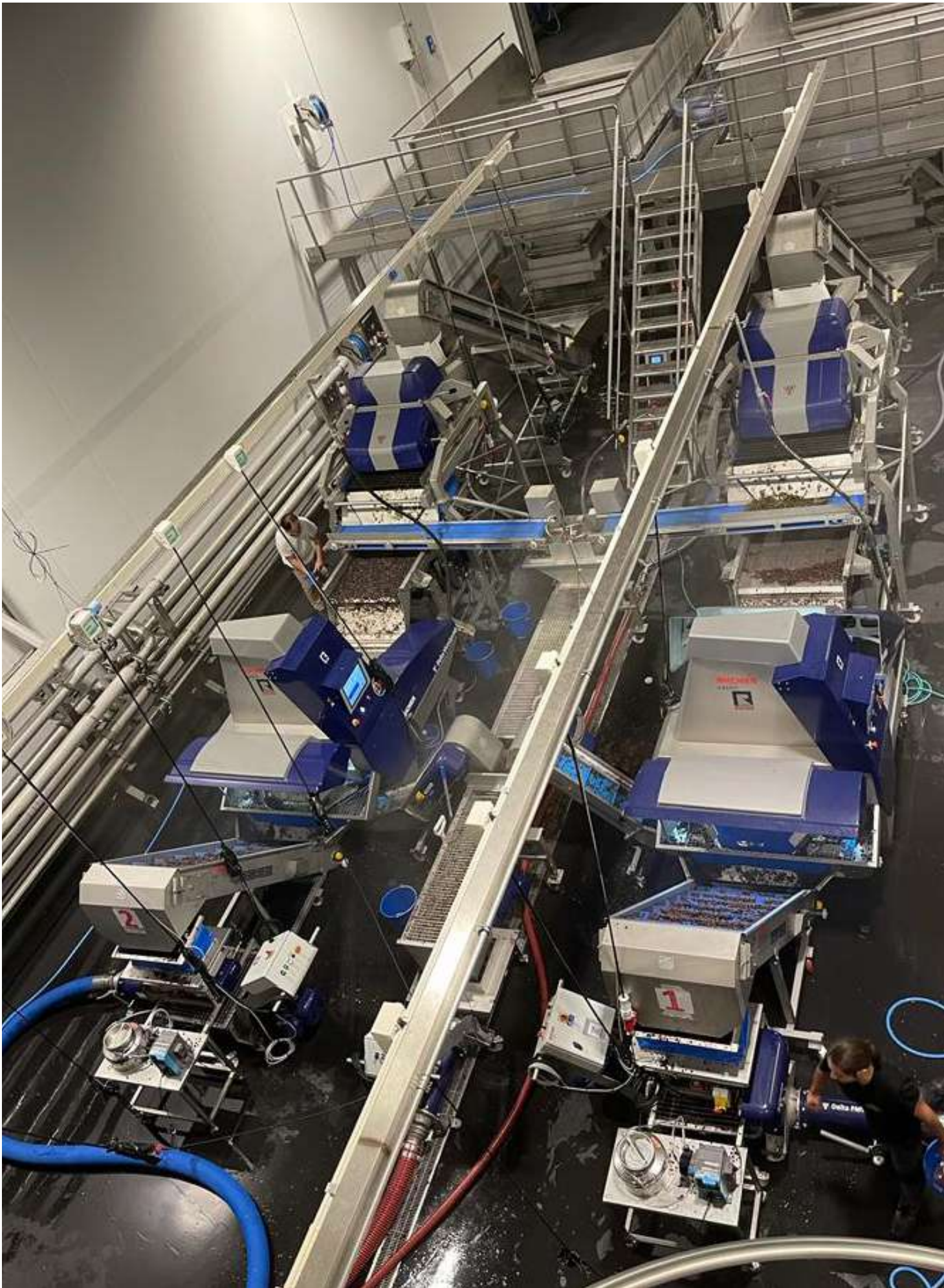
Vistalys HD chassis extension	Height 300 mm For collecting sorted grapes with an ELVTR belt Includes: - a Vistalys HD extension - a TRV 20 extension	478027
Vistalys HD chassis extension + 500 mm	Height 500 mm For collecting sorted grapes with an ELVTR belt or positioning an FC1 crusher on a PMV pump Includes: - a Vistalys HD extension - a step for the operator to stand on - a TRV20 extension	484880

Sensor

HF scanning level sensor PMV1/2/4	Anti dry-running mechanism Delivered in kit form	449111
-----------------------------------	---	--------

Screws

Vistalys HD waste removal screw	For removing unwanted berries and waste material	477994
---------------------------------	--	--------



Processing the harvest





Rotathermic 58

Extractys 59



Heat exchanger | Delta Rotathermic



Description

Connected to a boiler, the Delta Rotathermic heat exchanger makes it possible to heat the grapes to a temperature of up to 85°C with a continuous flow.

The heat exchanger works by means of a rotating shaft with paddles which ensures that the temperature is uniform throughout, thus avoiding any risk of overheating.

+ The advantages of our product

Hot water jacket heating system

Advantages

Effective:

- Interconnectable modules for up to three modules in a row
- Nominal flow rate of 10t/h per module
- Can be used for cooling
- Nominal flow rate 10 t/h per module with a differential of 60°C (Inlet 15°C / Outlet 75°C)



	Rotathermic 10 t/h	Rotathermic 20 t/h	Rotathermic 30 t/h
Hot water flow rate (m ³ /h)	45	90	135
Water temperature (°C)	95	95	95
Calorific power (kW)	815	1630	2445
Water connection flange	DN 100 PN10	DN 100 PN10	DN 100 PN10
Grape harvest connection flange	DN 125 PN10	DN 125 PN10	DN 125 PN10



Thermovinification | Delta Extractys

Description

Delta Extractys is a patented physical process for selective extraction.

It is designed to improve the level and quality of the extraction of pellicular compounds from grapes - such as polyphenols (anthocyanins and tannins), and aromatic precursors - from a thermovinified harvest.

Delta Extractys allows the winemaker to selectively control pellicular extraction to achieve the desired oenological result.

+ The advantages of our product

- Significant improvement in the oenological performance of a conventional thermovinification plant.
- Extraction level controlled by the winemaker according to the grape variety and the type of wine required (by adjusting the excess pressure).
- Wines that are more structured, more colourful, more aromatic, with a more marked typicity (supple, fruity wine profile, etc.).

Advantages

Effective:

- Freedom of choice and action for the winemaker: the Delta Extractys module can be switched on or off (process valves remain open)
- Can be adapted to all existing thermovinification lines regardless of their heating temperature and is easily integrated with no modifications (installed above the maceration tank)
- Works for vinification in the liquid or solid phase, for hot pellicular maceration...
- Very low energy consumption (compressed gas)

Maintenance:

- Easy to maintain: hot water rinsing of the pressure tubes through the harvest piping system

	Extractys
Flow regulation	This is possible thanks to the modular nature of the Delta Rotathermic: 3x10t/h
Water heating	From 20 to 65°C
Length (mm)	3000
Height (mm)	3700
Width (mm)	2200



buchervaslin.com

Bucher Vaslin

5 rue Gaston Bernier - BP 70028
49290 Chalonnes-sur-Loire - France
T +33 (0)2 41 74 50 50
connect.buchervaslin.com/contact